

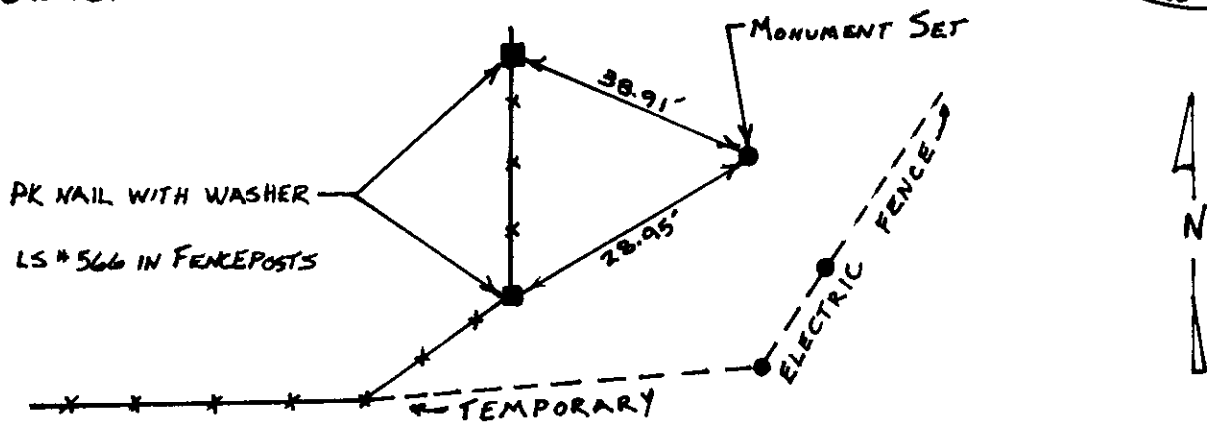
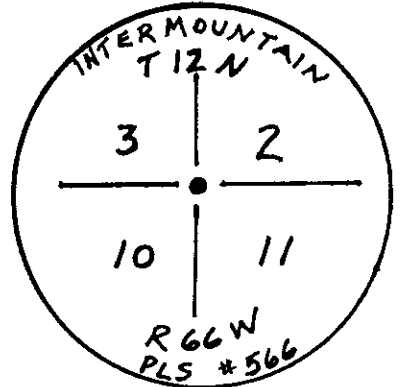
# State of Wyoming Corner Record

(In compliance with the *CORNER PERPETUATION AND FILING ACT*, Wyoming Statutes, 1977, Section 36-11-101, et. seq., and the Rules and Regulations of the Board of Registration for Professional Engineers and Professional Land Surveyors)

Reverse side of this form may be used if more space is needed.

Record of original survey and citation of source of historical information (if corner is lost or obliterated). Description of corner monumentation evidence found and/or monument and accessories established to perpetuate the location of this corner. Sketch of relative location of monument, accessories, and reference points with course and distance to adjacent corner(s) (if determined in this survey). Method and rationale for reestablishment of lost or obliterated corner.

**FOUND: GRANITE STONE 14x7x9" WELL SET**  
**SET: 3 1/4" CAP ON 2 3/8" x 36" ALUMINUM PIPE**  
**REFERENCE SET: PK NAIL WITH WASHER LS #566 SET**  
**IN FENCEPOSTS**  
**G.L.O. RECORD: SANDSTONE 21x9x8"**



**NOTE: STONE BURIED UPSIDE DOWN**  
**NEXT TO MONUMENT**

2653.10' - To N 1/4 Cor Sec 10  
 2646.13' - To N 1/4 Cor Sec 11  
 2646.37' - To E 1/4 Cor Sec 10

LARAH B. BRAMAN  
 CHEYENNE, WY  
 '96 SEP 13 AM 10 57  
**289569**

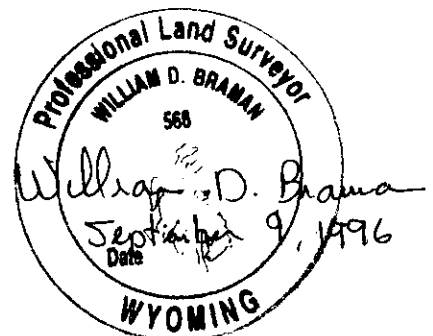
Date of Field Work: 19 July 1995 Office Reference: 2831

### CROSS INDEX DIAGRAM

1	2	3	4	5	6	7	8	9	10	11	12	13	14	15	16	17	18	19	20	21	22	23	24	25	
A																									
B																									
C																									
D																									
E																									
F																									
G																									
H																									
J																									
K																									
L																									
M																									
N																									
O																									
P																									
Q																									
R																									
S																									
T																									
U																									
V																									
W																									
X																									
Y																									
Z																									

Firm/Agency, Address  
 INTERMOUNTAIN PROFESSIONAL SERVICES, INC.  
 5801 OSAGE AVENUE  
 CHEYENNE WY 82001  
 Telephone Number: (307) 632-3138

This corner record was prepared by me or under my direction and supervision.  
**SEAL & SIGNATURE**



Corner Name: SEC CORN 3/2 Section: T 12N R 66W; 6 P.M. Cross-Index No.: E17  
 10/11